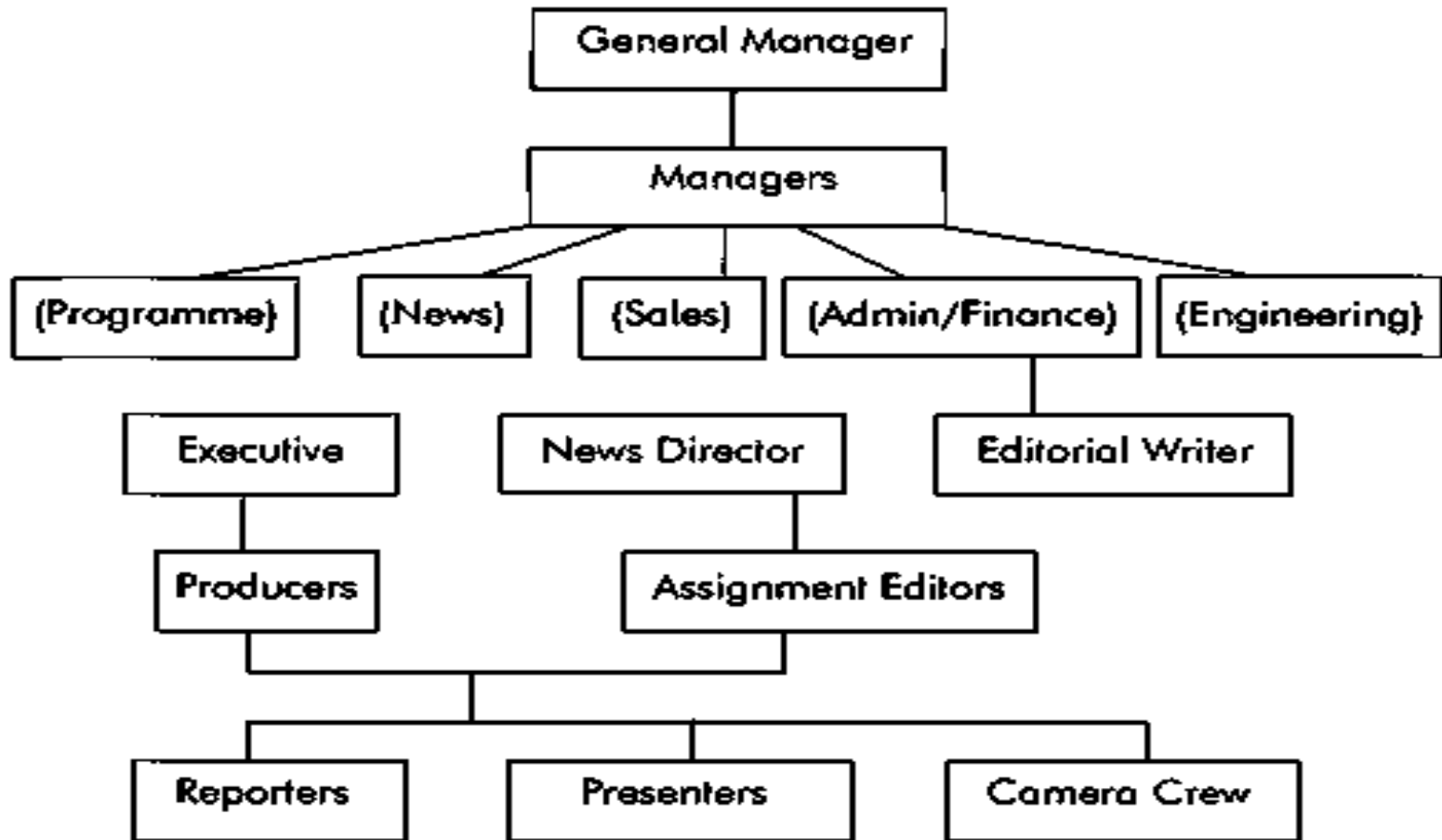


Television production

Class lecture 1

Structure of a TV station



Studio floor

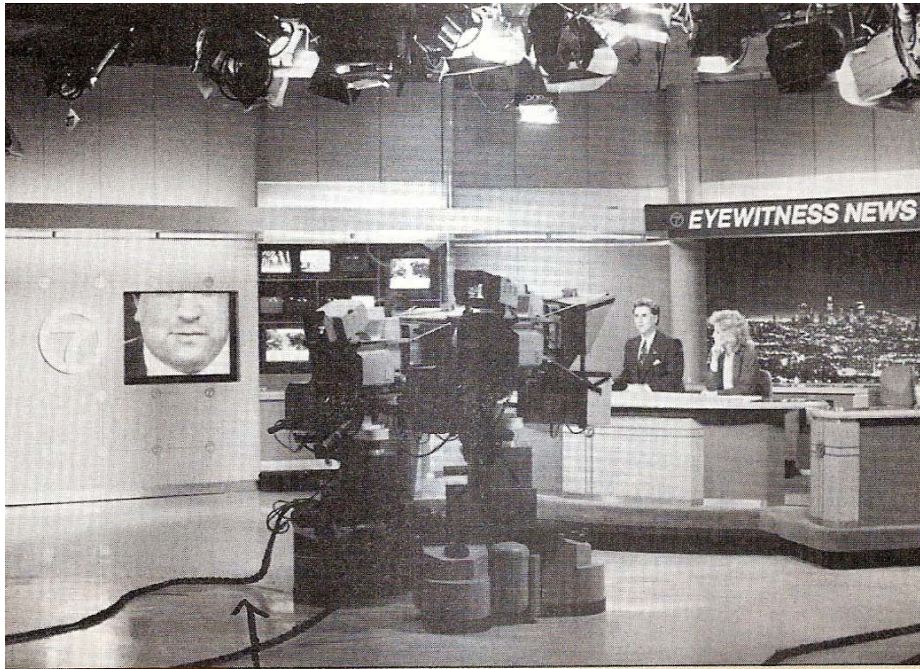


Figure 2.1

A TV studio. The anchors for a newscast sit on the news set that is placed in the studio. Cameras, lights, and microphones are also in the studio. *Photo courtesy of KABC-TV.*

Control room



Figure 2.2

A TV control room. While the anchors are reading the news stories from the studio, these people in the control room are making sure that the right picture and sound are broadcast. *Photo courtesy of KABC-TV.*

Floor manager

- The Floor Manager is the director's representative on the studio floor.
- Is responsible for giving instruction and direction to crew, cast and guests.
- keep a production moving to schedule.
- Checks that the floor is clear and safe for the performance required.
- Turns on the appropriate lights; gives announcements to staff and audience.
- Helps to maintain the set in order; calls cues to begin the action and prompts talents as required.

Assistant floor manager

- Is responsible for setting the stage and prompting contributors on the studio floor.
- Ensuring that everyone knows their place in the script.
- Manages a team of runners and helps with the design and preparation of props.

Camera operator

- Is the head of the camera crew.
- The camera operator uses the camera as required by the director.
- They are responsible for capturing the required action in the frame.
- To creatively be alert while proceedings take place.

Cinematographer

- Regulates the lighting for every scene
- Is responsible for framing some shots,
- Chooses the lenses to be used,
- Decides on the visual appearance of the project.

Producer

- Brings the vision to the screen.
- The producer monitors the show in the control room to ensure that everything goes smoothly.
- He/she makes major decisions about the various components in the program/show.

Production manager

- Concerned with the business of the crew.
- Concerned with the overall organization of the production from gaining the correct. equipment, arranging accommodation for the cast and crew.
- In charge of technical needs of the production.

Technical director

- is responsible for the proper working of all the equipment in the control room.
- Sorts out any technical problems that may arise during and after the production.

Presenter

- is the front-person for a program responsible for Presenting information and/or opinions.

Gaffer

- The gaffer is the head electrician on the production set.
- is in charge of lighting the stage in accordance with the direction of the cinematographer.
- In television the term chief lighting director is used and will light the studio set.

Boom operator

- Is microphone placement. Sometimes using a "fishpole" with a microphone attached to the end.
- Placing wireless microphones on actors whenever it is necessary.
- Work closely with the production sound mixer, or sound recordist, to record all sound while filming including background noises, dialogue, sound effects, and silence.



Runners

- Are responsible for supporting anyone who needs help in a variety of ways, during the production.

Dolly grip

- Is in charge of positioning, the dolly track where it is required, and then pushes and pulls the dolly along that track while filming. Works closely with the camera crew.



Director

- in charge of all Video, Sound on Tape, package, and graphics, live shot studio camera shot, microphone audio, special effects and any other production element in their proper order and time.

Production Assistant

- is responsible for communication with the broadcasting channel during a live show, counting down the time before transmission aloud to the crew via the studio microphone.
- They also count down time remaining for sections of a programme, such as an interview or an advert break.

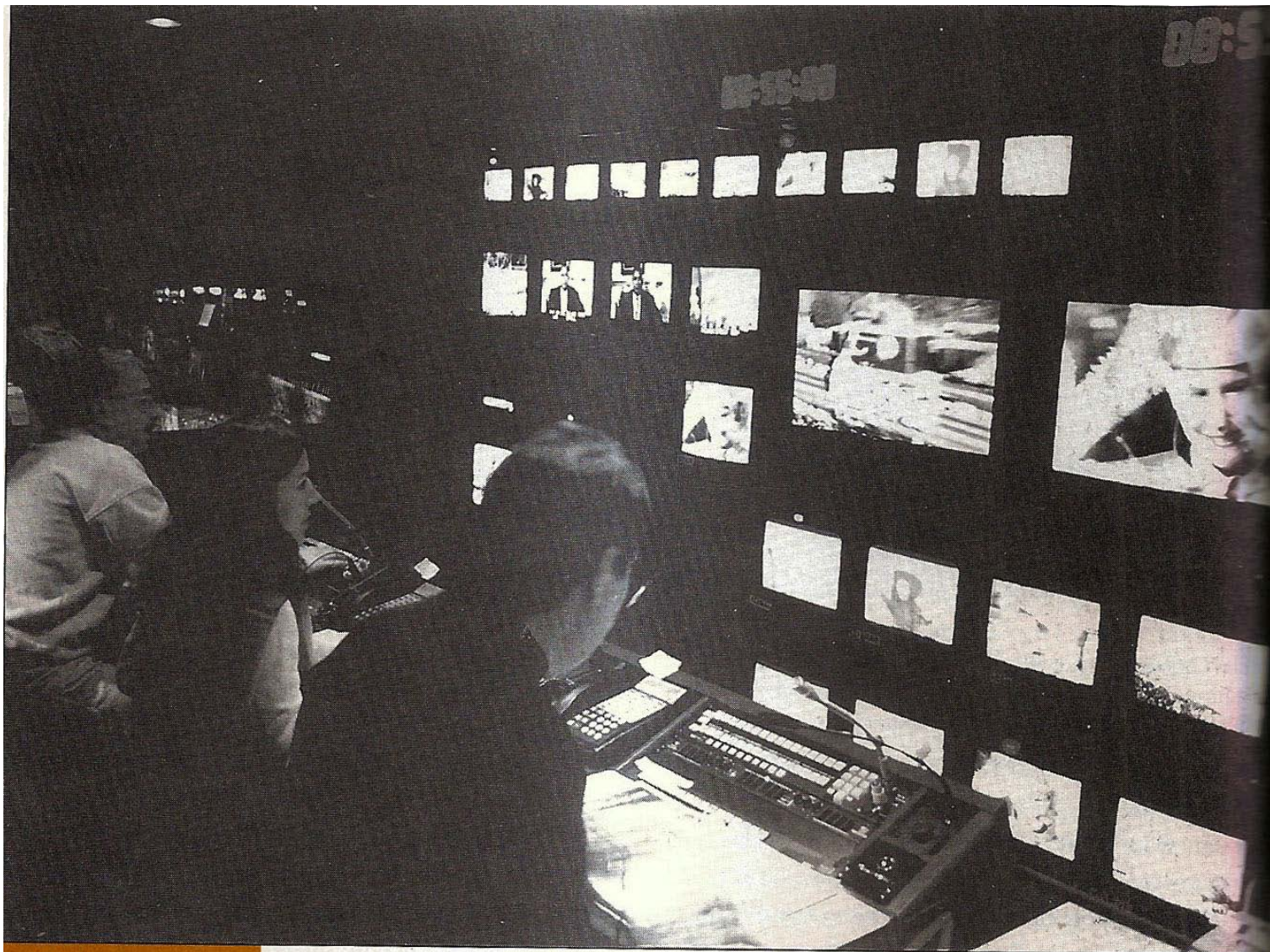


Figure 1.7

Steve Orlandella, director with KTLA-TV Los Angeles, is seen here directing the first digital telecast of the Rose Bowl Parade from Pasadena, California, January 1, 1999. Note the 16:9 size of the primary monitors in the digital control truck. *Photo courtesy of Joseph Marr/Television Broadcast.*

Vision mixer or Switcher

- is responsible for the actual switching between different video sources, such as camera shots and video inserts.
- They also maintain color and contrast balance between the studio cameras.

Video Tape Operator

- Puts the tapes in the playback machines in the order they are supposed to run for the show.
- Cues and prepares video inserts into a program, sets up and operates the videotape equipment to record and play back the program.

Graphics operator

- prepares, designs and displays on-screen graphics.
- Sometimes called Aston, Chyron

Video editors

- turns raw footage into edited video by putting together the desired images in the desired order.

